

# 13 Architectural Words That Are Totally Flash in the Pan

When it comes to architecture, there are a lot of terms that get thrown around. Some of them are common, like "façade" or "architrave." Others are more obscure, like "fenestration" or "entablature." And then there are some that are just plain weird. Here are 13 architectural words that are totally flash in the pan.

## 1. Bagua

Bagua is a Chinese term that refers to the eight trigrams of the I Ching. In architecture, bagua is used to describe the arrangement of a building or room according to the principles of feng shui. Bagua is said to promote balance and harmony in a space.



### Architecture Words 13: Flash in the Pan

★★★★☆ 4.4 out of 5

Language : English  
File size : 15609 KB  
Text-to-Speech : Enabled  
Enhanced typesetting : Enabled  
Print length : 225 pages  
Lending : Enabled  
Screen Reader : Supported





## 2. Boiserie

Boiserie is a French term that refers to wood paneling that is used to decorate walls or ceilings. Boiserie is often carved or painted with decorative motifs. It is a common feature in classical and traditional architecture.



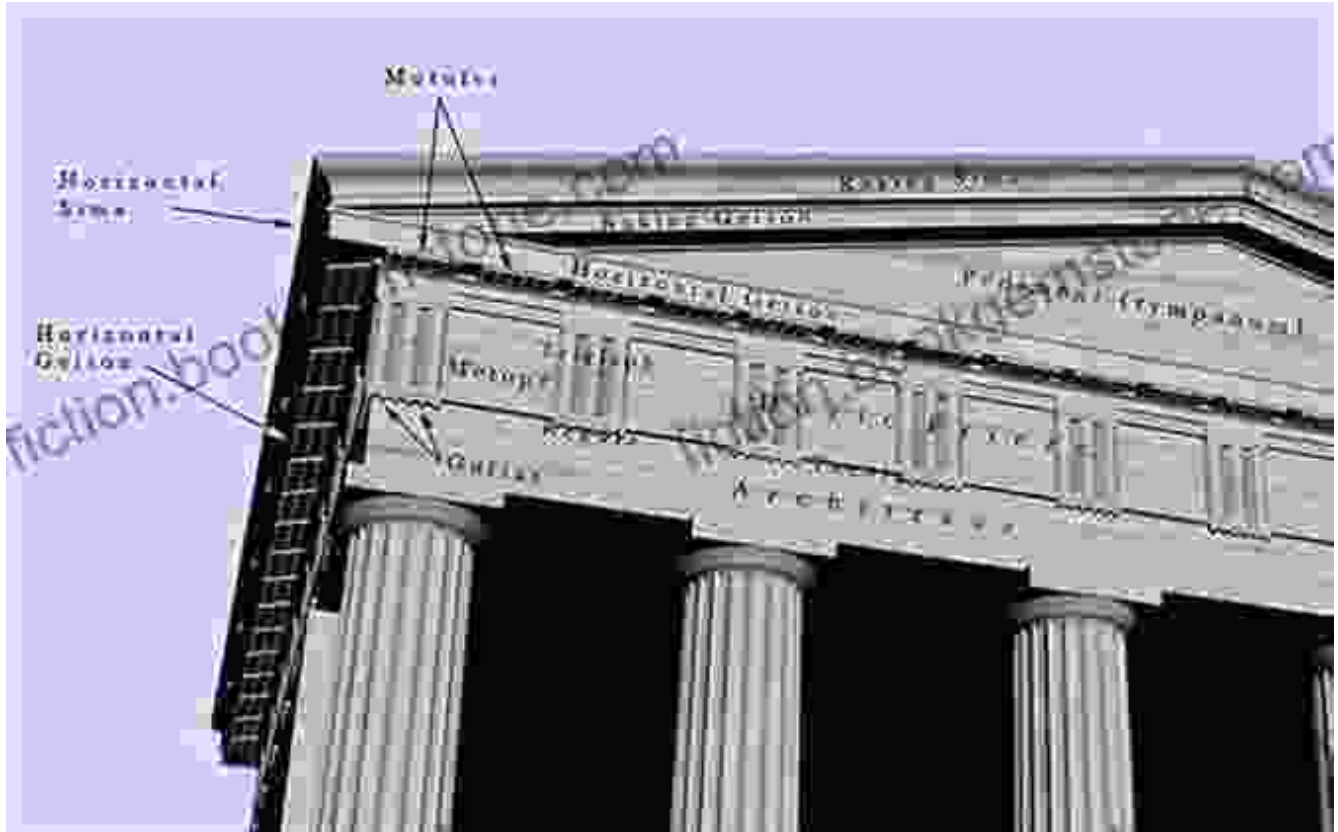
### 3. Crenellation

Crenellation is a term that refers to the battlements on top of a castle or fortress wall. Crenellations are designed to allow defenders to fire arrows or drop objects on attackers below. They are a common feature in medieval architecture.



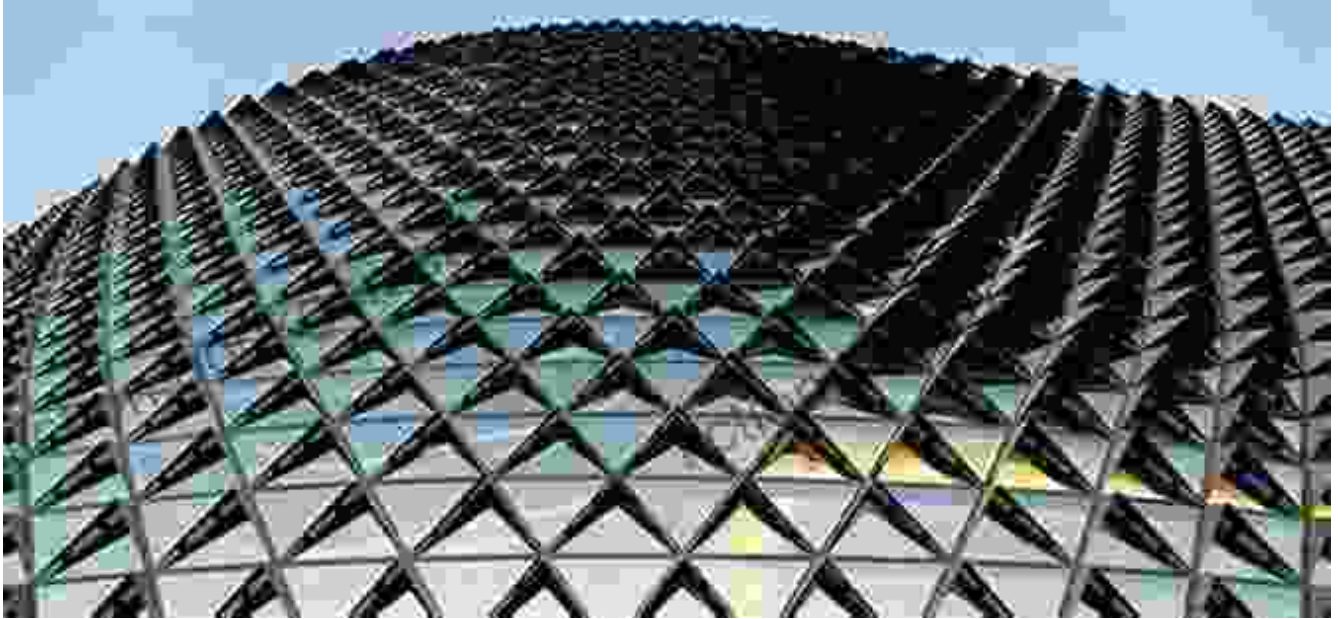
#### **4. Entablature**

Entablature is a term that refers to the horizontal band of moldings that runs above the columns or pilasters of a building. Entablatures are often decorated with carvings or other decorative motifs. They are a common feature in classical and traditional architecture.



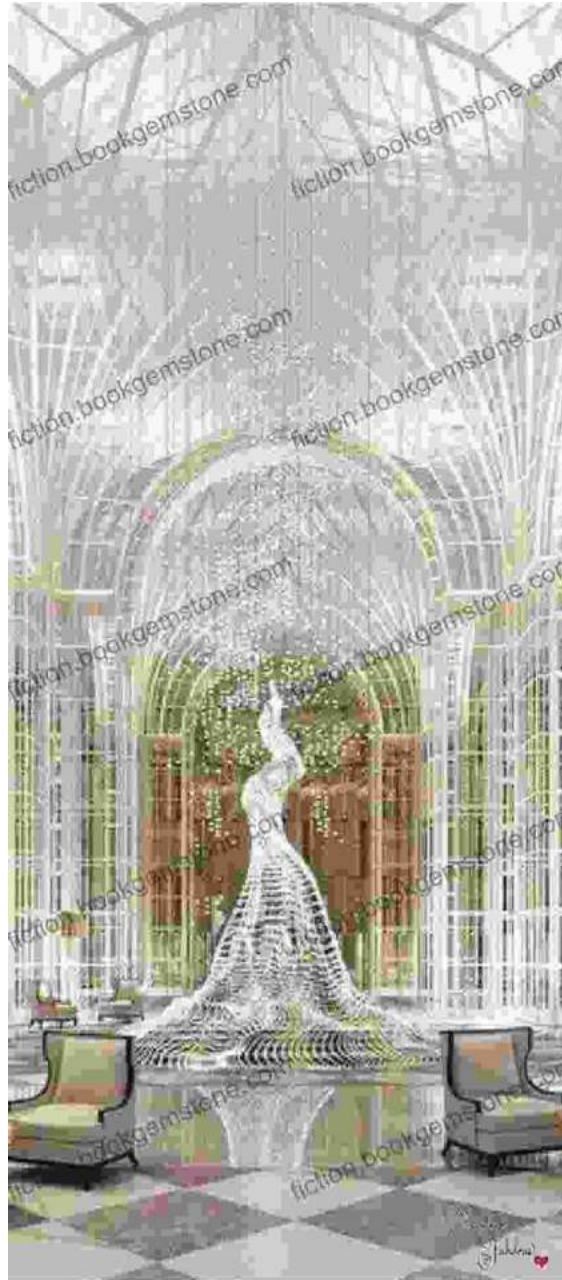
## 5. Fenestration

Fenestration is a term that refers to the arrangement of windows and doors in a building. Fenestration can be used to control the amount of light and ventilation in a space. It is a common feature in all types of architecture.



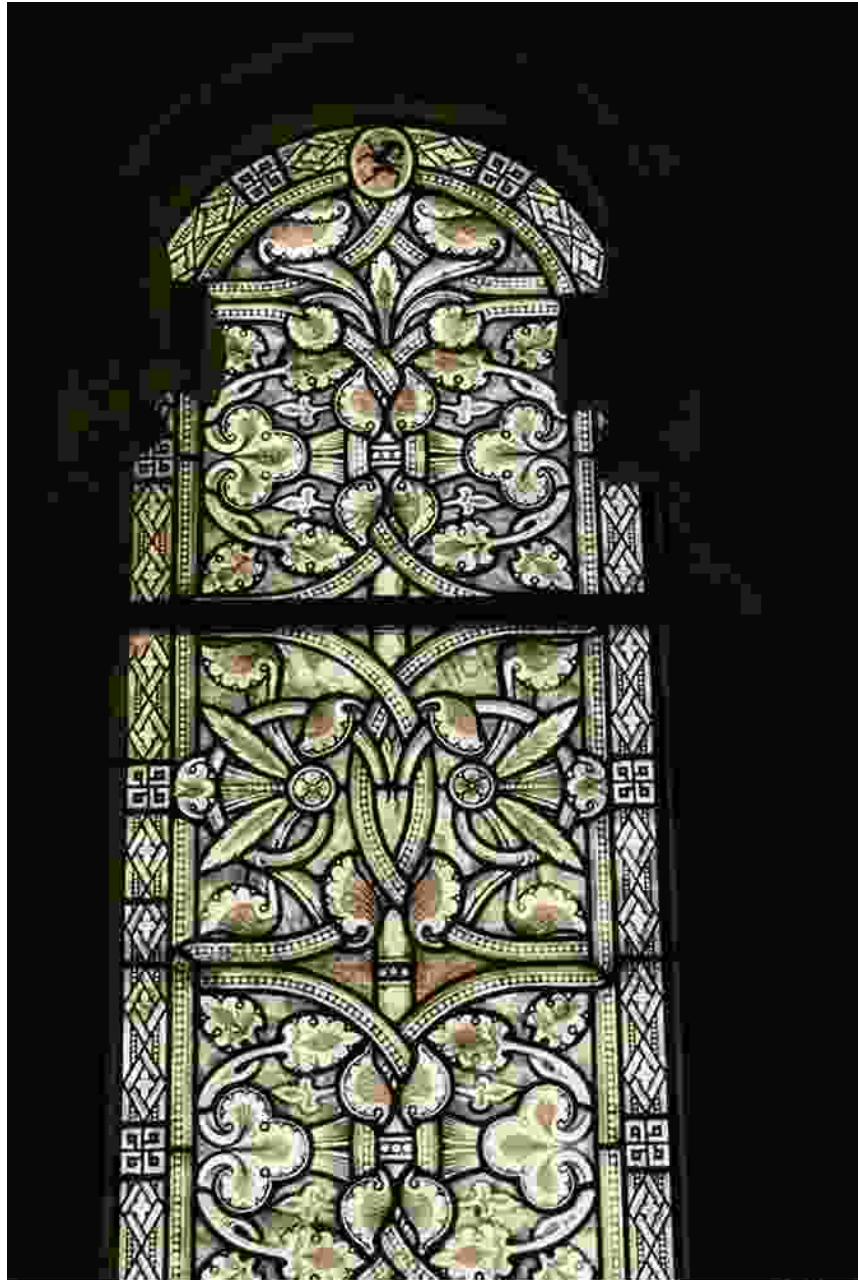
## **6. Frivolity**

Frivolity is a term that refers to unnecessary or excessive decoration. In architecture, frivolity can refer to any type of decoration that is not essential to the structure or function of a building. It is often considered to be a sign of bad taste.



## 7. Grisaille

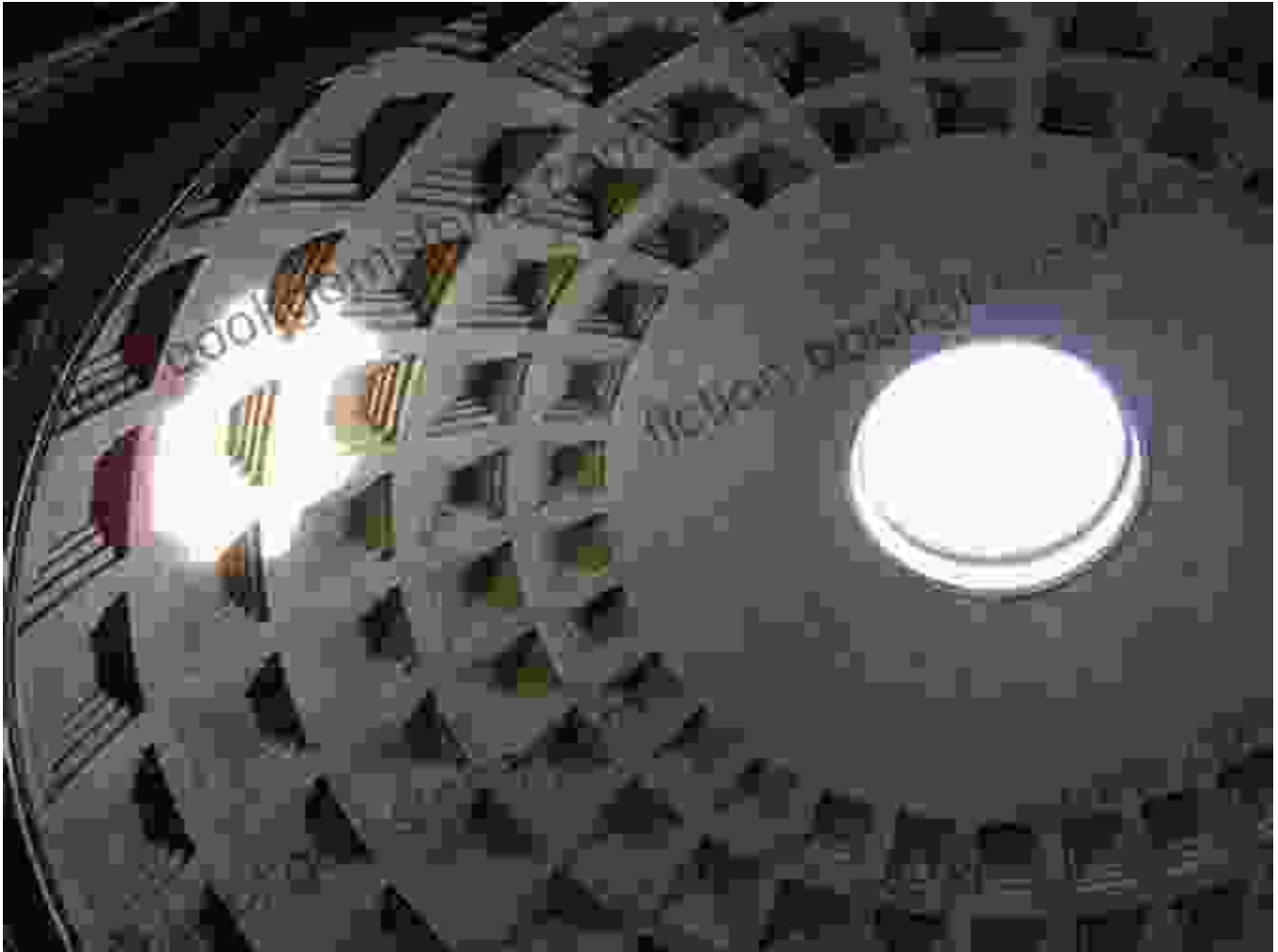
Grisaille is a term that refers to a type of painting that is done in shades of gray. Grisaille is often used to imitate sculpture or other decorative elements. It is a common feature in medieval and Renaissance architecture.



## 8. Oculus

Oculus is a term that refers to a circular opening in a wall or ceiling. Oculi are often used to provide light and ventilation. They are a common feature in Roman and Byzantine architecture.





## 9. Pediment

Pediment is a term that refers to the triangular gable end of a building. Pediments are often decorated with carvings or other decorative motifs. They are a common feature in classical and traditional architecture.



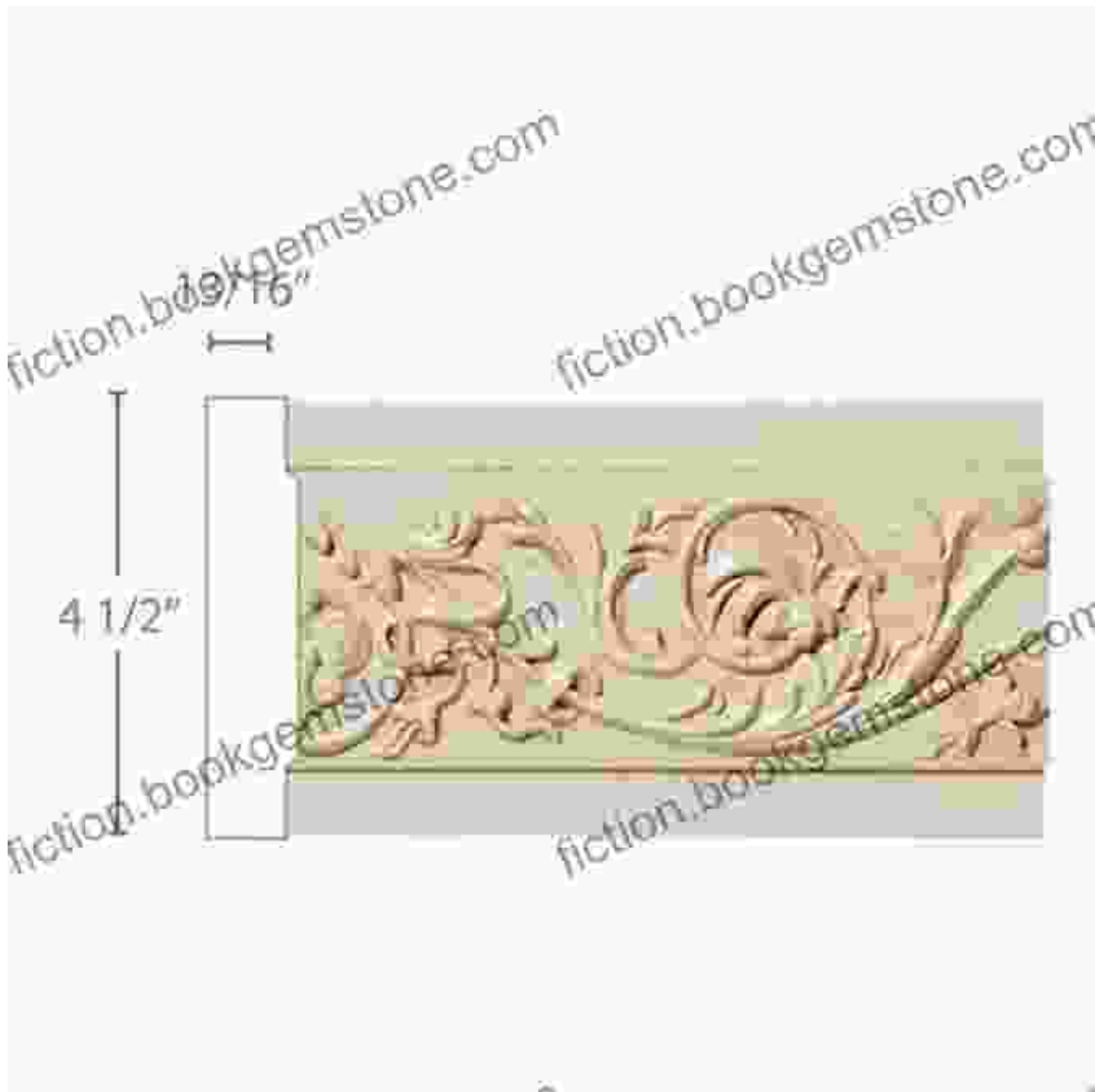
## 10. Quoin

Quoin is a term that refers to a stone block that is used to reinforce the corners of a building. Quoins are often larger and more decorative than the other stones in a wall. They are a common feature in medieval and Renaissance architecture.



## 11. Rinceau

Rinceau is a term that refers to a decorative motif that features flowing leaves and scrolls. Rinceau is often used to decorate moldings, friezes, and other architectural elements. It is a common feature in classical and traditional architecture.



## 12. Trompe l'oeil

Trompe l'oeil is a term that refers to a type of painting that creates the illusion of three-dimensionality. Trompe l'oeil is often used to decorate walls and ceilings. It is a common feature in Baroque and Rococo architecture.



### **13. Voussoir**

Voussoir is a term that refers to a wedge-shaped stone that is used to construct an arch. Voussoirs are often decorated with carvings or other decorative motifs. They are a common feature in Roman and Gothic architecture.



## Architecture Words 13: Flash in the Pan

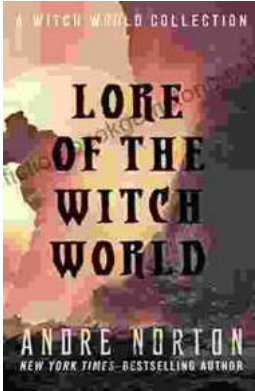
★★★★☆ 4.4 out of 5

Language : English  
File size : 15609 KB  
Text-to-Speech : Enabled  
Enhanced typesetting : Enabled  
Print length : 225 pages  
Lending : Enabled  
Screen Reader : Supported

FREE

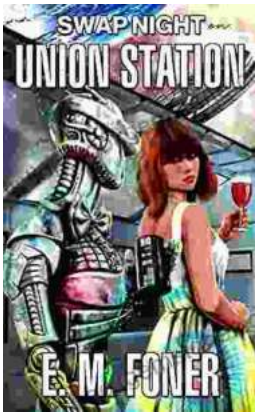
DOWNLOAD E-BOOK





## **The Enchanting Realms of Witch World: A Collector's Guide to the Lost Fantasy Series**

In the vast and ever-evolving landscape of fantasy literature, few series have captured the hearts and minds of readers like Witch World. Created by the...



## **Swap Night on Union Station EarthCent Ambassador 19: A Unique Opportunity for Space Enthusiasts**

On a crisp autumn evening in the bustling city of Baltimore, Maryland, the historic Union Station became a hub for space enthusiasts and collectors alike. The...